



LV Prasad Eye Institute

Bhosle Gopal Rao Patil Eye Centre

A Universal Eye Health Model

25

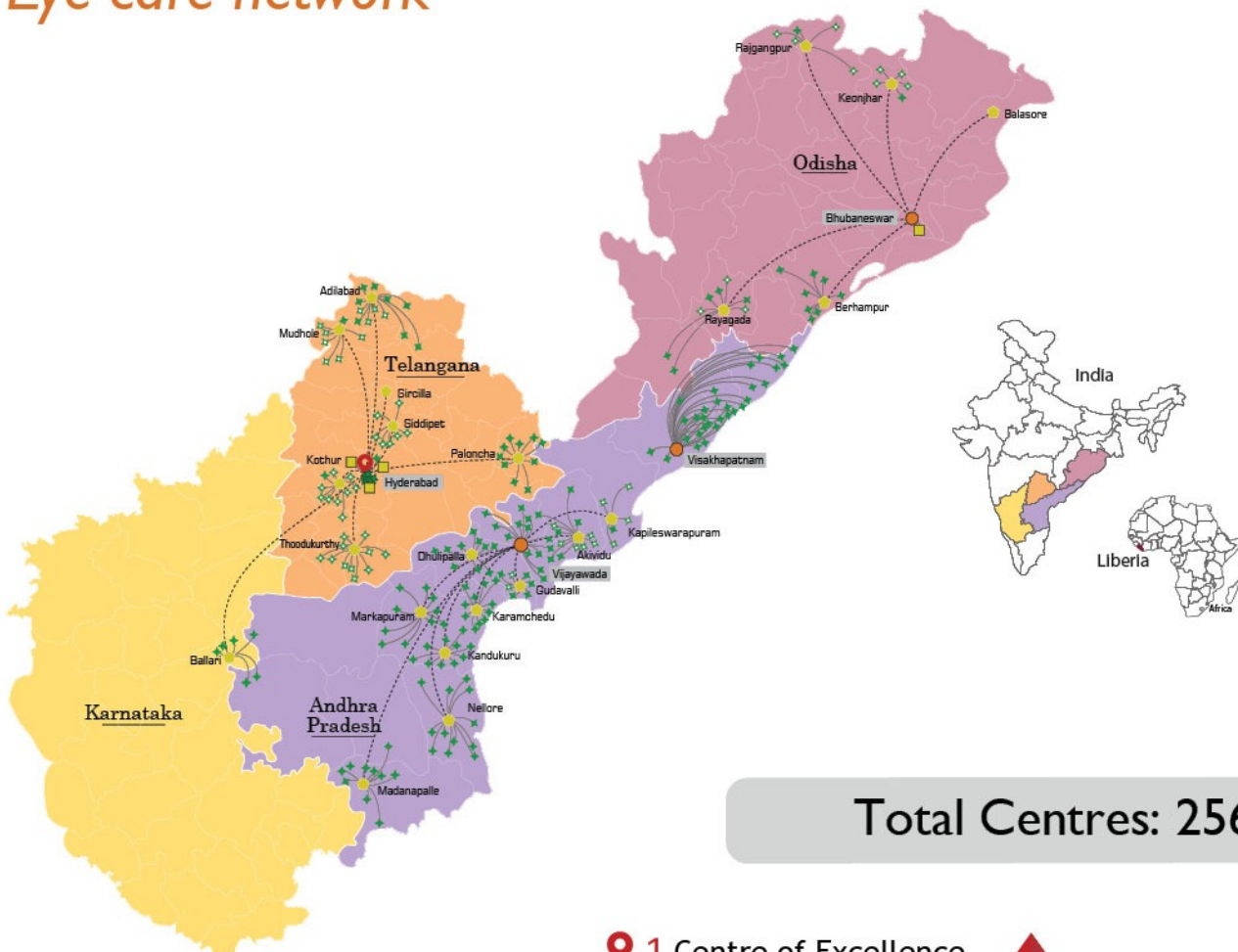
Years & counting



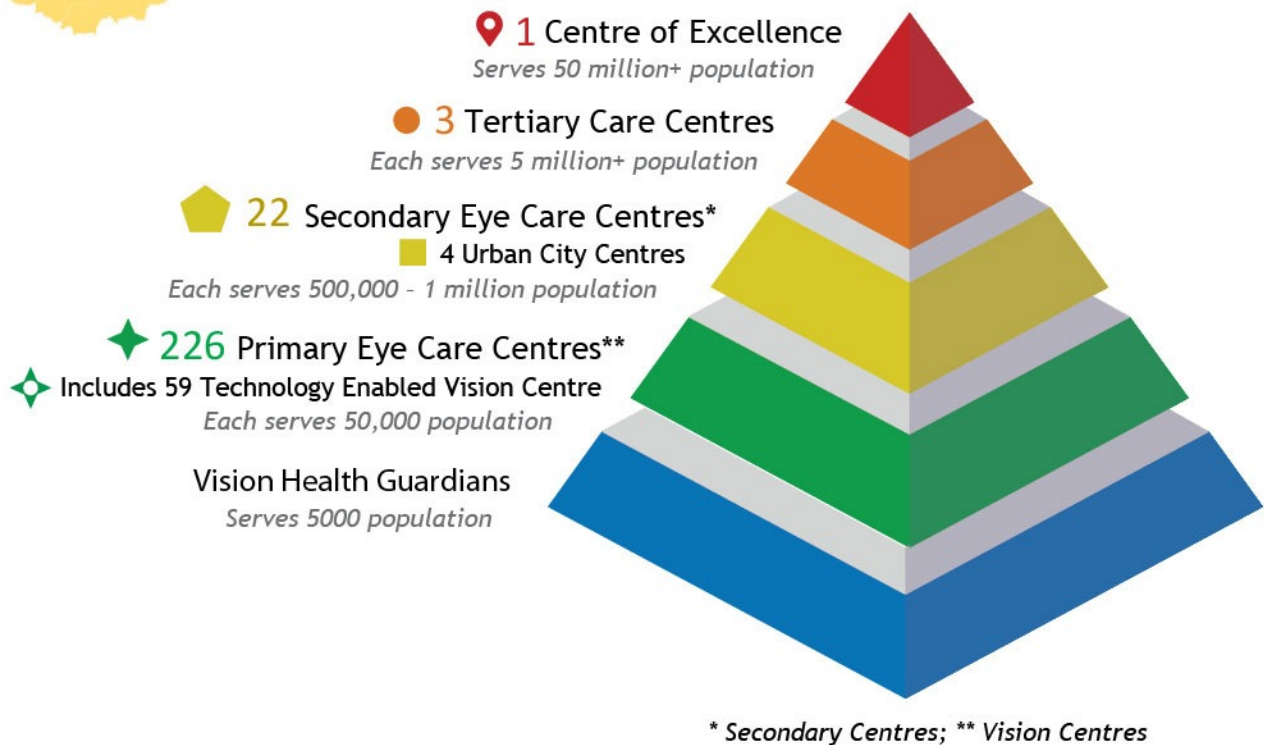
A Relentless Journey of Providing
EQUITABLE EYE CARE

L V Prasad Eye Institute

Eye care network



Total Centres: 256



As of March 2022 we have 226 Vision Centres, 22 Secondary Eye Care Centres, 4 Urban City Centres, 3 Tertiary Eye Care Centres and our flagship Centre of Excellence. Additionally, LVPEI has 9 Partner Centres and 1 Overseas Partnership in West Africa with Liberia Eye Centre in Monrovia.

Established in 1987, **LV Prasad Eye Institute (LVPEI)**, a World Health Organization Collaborating Centre for Prevention of Blindness, is a comprehensive eye health organization. The Institute has ten active functional arms: Clinical Services, Education, Research, Vision Rehabilitation, Rural and Community Eye Health, Eye Banking, Advocacy and Policy Planning, Capacity Building, Technology-Innovation and Product Development. All the activities are carried out through its five tier pyramidal model covering primary, secondary and tertiary levels of care.

LVPEI Values



Mudhole – Our Pride

What a journey

Mudhole is an inspiring story that the LV Prasad Eye Institute family is proud of. Mudhole is nestled in the deep, rural parts of Nirmal district, Telangana (formerly Adilabad district, Andhra Pradesh). In the mid-90s, this village of a few thousand people attracted our attention for its remoteness, economic and social disadvantages and a near-total absence of health care and other essential services. Coupled with this was our desire to make a foray into rural eye care and serve the most disadvantaged and vulnerable communities.



The genesis of the idea of getting into rural eye health came from the revelation that the rate of avoidable complications in rural areas was unacceptably high. A dear friend, [PG Michael](#), who was heading the [Christoffel Blindenmission \(CBM\)](#), reminded us that organizations like ours had a responsibility to blaze a new trail. He even pledged partial funding for such a project. Subsequent discussions led to the commitment of a matching grant from [Sightsavers International](#) made possible by similar interest from their then Head, [Doraiswamy Nagarajan](#).

Believing in the potential of our idea, the staff of a local community development organization [Gram Abhyudaya Mandali \(GRAM\)](#) pledged to pay for the land allocated for this project by the government. With all this in place, the planning, human resource selection and training commenced. Most of the staff were recruited from the local communities. Hearing of these developments, a businessman and political leader, [Narayana Rao Patil](#) from the neighbouring region (Bhainsa), contributed a third segment of the total capital budget. Thus the model of a secondary centre, meant to provide comprehensive eye care embodying the principles of universal health: quality, equity, comprehensive-care, team-approach, international partnership, and strong local community support, emerged in the form of [Bhosle Gopal Rao Patil Eye Centre](#) on the 20th of December 1996.

Indeed the progress made, contrary to all the initial dire predictions, has been impressive and inspiring. Mudhole has evolved into a model of comprehensive, high-quality care, practising equity in the true sense with excellent outcomes and financial self-sustainability. While the clinical care and outcomes are of very high standard, equally impressive is the impact of prevention programmes through multiple community based initiatives including community based rehabilitation. Based on its performance and steady progress made,

the centre has been recognized and highly appreciated globally as a model for [Universal Eye Health](#) worthy of emulation. The name [Mudhole](#) has found a place in the eye health literature. Most of the team members who started 25 years ago continue to be part of this incredible journey even today, having an immense sense of pride for the impact created and the respect they have garnered in the community.

As I look back, I am very grateful to PG Michael for challenging and supporting this new dimension to our Institute, to Nagarajan for making this idea a reality, and to the incredible team of GRAM. The contribution from the Patil family has demonstrated that mobilising local support is possible for such projects. If one has the right idea with a high potential for impact, financial support is available. All this support received, along with the commitment of the team, has paved the path for consistently high performance and accelerated growth.

A quarter-century ago, when we were approaching the tiny village of Mudhole, a white structure was visible in the horizon on top of a low hill, the solitary silhouette of Bhosle Gopal Rao Patil Eye Centre. Since then, the development around the centre has hidden the building from such a view, the impact of the Centre has eliminated darkness in the lives of hundreds of thousands in the surrounding communities. It shines a light on a unique, community driven model of care for the world to learn from. The story of Mudhole demonstrates in ample measure, that our aspiration “So that all may see” is no longer an elusive target.

Gullapalli N Rao

Milestones

25 glorious years

1996-2000

- Centre inaugurated and patient care service initiated
- Andhra Pradesh Eye Disease Study – I
- First door-to-door screening project initiated - Community Eye Care and Community based Rehabilitation

2001-2005

- First rural Vision Centre established (location - Bhainsa)

2006-2010

- Rapid Assessment of Cataract Surgical Services (RACSS) study
- Andhra Pradesh Eye Disease Study – II
- Low vision services started



